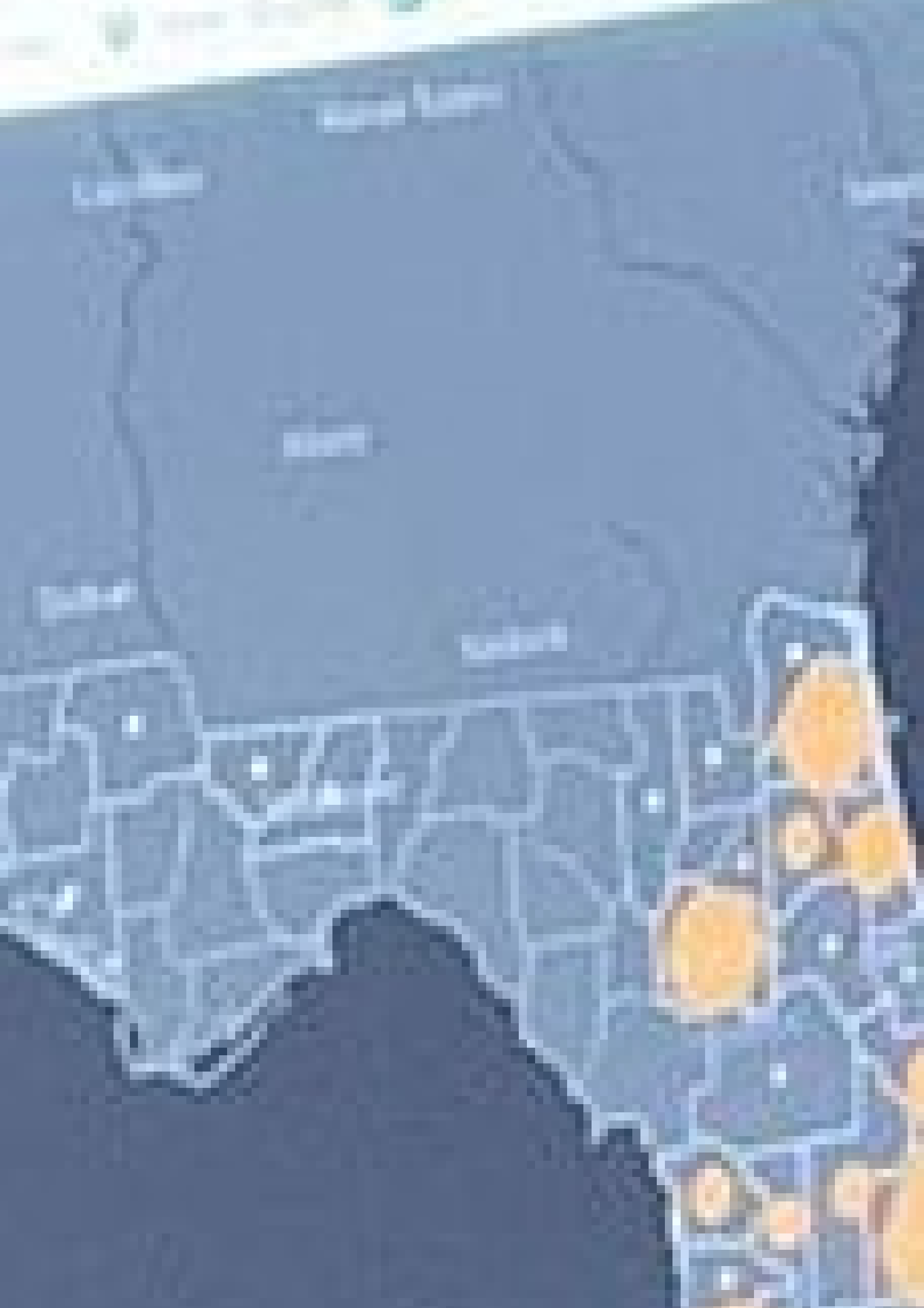


[Products](#)[Solutions](#)[Support & Services](#)[News](#)[About](#)[Sign In](#)













ARCNEWS

ArcGIS Hub Enables Communities to Rapidly Share Up-to-Date Data on COVID-19

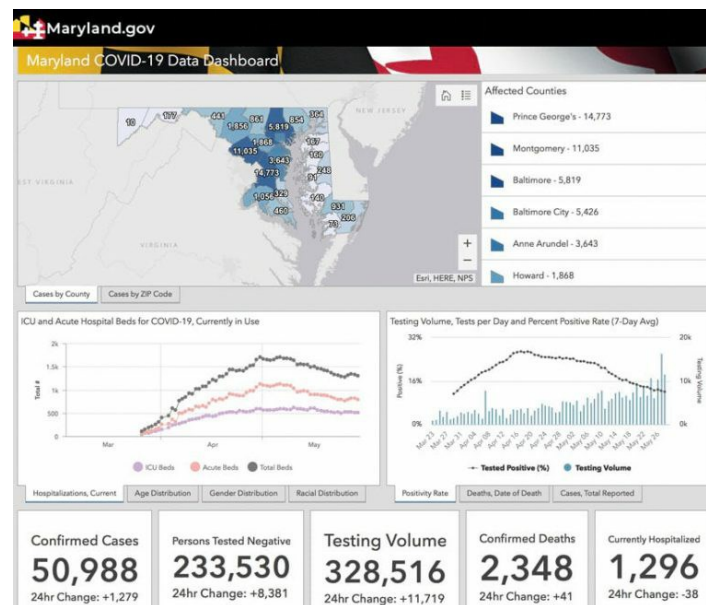
To keep the public informed about swiftly changing information throughout the coronavirus disease 2019 (COVID-19) pandemic, scores of governments and agencies have used ArcGIS Hub to create open data sites. These sites help increase transparency and build trust in local government—and they're especially important during a large event like a pandemic to communicate up-to-the-moment news and resources. With maps that show

everything from community spread of the disease to updates on local school closures, these open data sites provide residents and local officials with the information they need to protect their communities, stay safe, prevent infections, and make data-informed decisions.

The following are several examples of open data sites, built with ArcGIS Hub, from across the United States that have given residents important resources and updates on COVID-19 throughout the crisis.

Maryland Provides Accurate and Timely Data

To coordinate content and updates going out to the community, the Maryland Department of Information Technology (DoIT) Geographic Information Office (GIO) created a site using ArcGIS Hub in partnership with several agencies, including the Maryland governor's office, the Maryland Department of Health (MDH), and the Maryland Emergency Management Agency (MEMA). [The hub site](#) was designed to be an authoritative source of reliable information on COVID-19 and provide users with fast and easy access to resources.



The hub site for the State of Maryland gives users easy access to authoritative information about the coronavirus disease 2019 (COVID-19).

"I want to instill confidence in Marylanders that their state government is providing accurate and timely data to all visitors to the site," said Julia Fischer, director of data services for business intelligence and GIS at DoIT. "The data is accessible to all Marylanders and is providing a clear and definitive picture of the state's response to the unprecedented events occurring right now."

Fischer said the DoIT GIO team selected ArcGIS Hub to create the new site because the Esri platform is what she and her staff know best. The team members created the initial site in about four hours, coordinating with staff at MDH, MEMA, and the governor's office so they could make content updates directly to the site.

The site includes a prominently placed dashboard that shares vital statistics regarding confirmed COVID-19 cases (broken down by county and ZIP code), hospitalizations, and testing results. The site also provides details regarding symptoms of COVID-19, how best to practice social distancing, links to local health departments, and more. It features practical resources such as links to information from the Centers for Disease Control

and Prevention (CDC) and related highlights from governor Larry Hogan's official website.

"We are providing a site that includes...quick access to interactive maps and dashboards, as well as data analytic capabilities, ensuring that Marylanders are well-informed about health and safety topics related to COVID-19 in Maryland," said Fischer.

MDH continues to work to consolidate data to gain a clear picture of the statewide efforts to combat COVID-19, along with their effects. As such, the data featured on the site is derived from the work of MDH and its partners. Additional subpages that have recently been developed show the locations of congregate facilities and testing sites throughout the state to help visitors gain a clearer understanding of the impact of the pandemic.



I want to instill confidence in Marylanders that their state government is providing accurate and timely data to all visitors to the